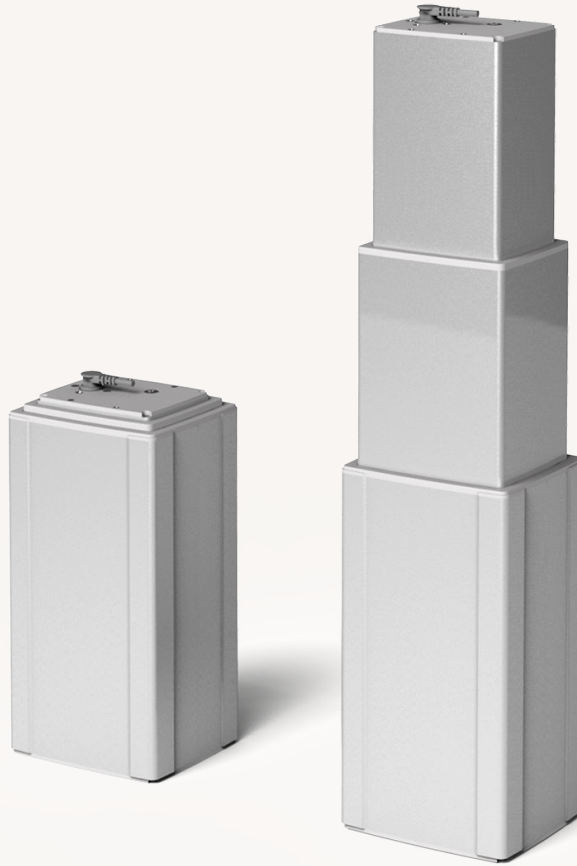


TL3

series



Product Segments

- **Care Motion**
- **Ergo Motion**

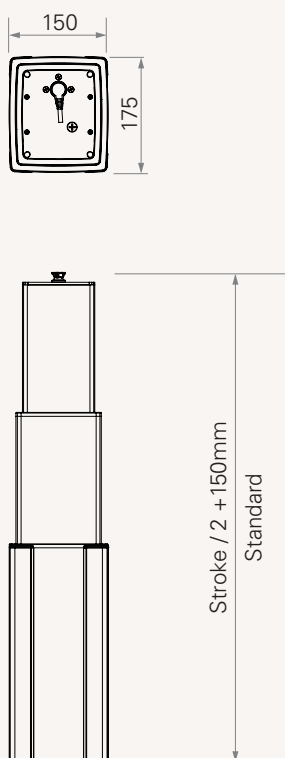
The TL3 is a 3-section lifting column that can be applied to use in both medical and ergo applications, such as hospital beds, nursing home beds, treatment couches and office desks. Its 3 sections outer tube design can support the shortest installation dimension and longer stroke options.

General Features

Maximum load & self-locking	4,000N
Maximum speed	39.0mm/s
Minimum installation dimension	Stroke/2+150mm (if max. load=1,000/2,000N)
Minimum installation dimension	Stroke/2+220mm (if max. load=4,000N)
Dimension of cross section	175x140mm
Stroke	100~700mm
Option	Hall sensors

Drawing

Standard Dimension



Load and Speed

CODE	Rated Load		Self Locking N (PUSH)	Typical Current at Rated Load (A)	Typical Speed	
	PUSH N	Dynamic Bending Moment (NM)			No Load (32V DC) mm/s	Rated Load (24V DC) mm/s

Standard Motor (2200RPM)

B	4000	1000	4000	5.5	14.5	7.6
C	2000	250	2000	3.5	22.0	13.0
D	1000	250	1000	3.1	39.0	24.0

Fast Speed (2800RPM)

E	4000	1000	4000	7.2	18.5	11.0
F	2000	250	2000	5.3	37.0	23.5

Retracted Length

	Cable Exit from Front End	Cable Exit from Rear End
Load & speed #B, #E (4000N)	Stroke/2 + 220mm	Stroke/2 + 240mm
Load & speed #C, #F (2000N)	Stroke/2 + 150mm	Stroke/2 + 170mm
Load & speed #D (1000N)	Stroke/2 + 150mm	Stroke/2 + 170mm

Note

- 1 The figures are the speed and current information under pushing condition.
- 2 Speed would be the same if with 12V motor, but with double current consumption.

Terms of Use

The user is responsible for determining the suitability of TiMOTION products for a specific application.

Due to continuous development in order to improve our products, TiMOTION products are subject to frequent modifications and changes without prior notice.

TiMOTION reserves the right to discontinue the sale of any products displayed on its website or listed in its catalogue or other written materials drawn up by TiMOTION.

TL3 Ordering Key

TL3

Version: 20131007-B

<input type="checkbox"/>	Voltage	1 = 12V	2 = 24V	3 = 36V
<input type="checkbox"/>	Load and Speed	See appendix		
<input type="checkbox"/>	Stroke	100-700 mm		
<input type="checkbox"/>	Retracted Length	See appendix		
<input type="checkbox"/>	Cable Exit Location	1 = From front end (removable cable set)	2 = From rear end (the cable set fixed on TL3)	
<input type="checkbox"/>	Special Functions for Spindle Sub-Assembly	0 = Without (standard)		
<input type="checkbox"/>	Functions for Limit Switches	1 = Two switches at the retracted/extended positions to cut current 3 = Two switches at the retracted/extended positions to send signal A = Customized		
<input type="checkbox"/>	Output Signals	0 = Without	2 = Two Hall sensors	
<input type="checkbox"/>	Plug	1 = TiMOTION's standard DIN 6pin plug	2 = Tinned leads	A = Customized
<input type="checkbox"/>	Cable Length	0 = Without (if choose cable exit location #1) 1 = Straight, 500mm 2 = Straight, 750mm	3 = Straight, 1000mm 4 = Straight, 1250mm 5 = Straight, 1500mm	6 = Straight, 1750mm A = Customized