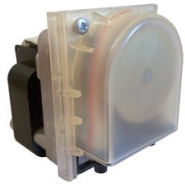


300 series

Specification Sheet 1 (last updated Sept 2012)



The 300 series range of peristaltic pumps has been designed to offer a low cost means of dosing a wide range of liquids. As with all peristaltic pumps they have excellent suction performance, are self priming up to 5 metres from dry and capable of pumping up to 15 m head pressure. Peristaltic pumps offer a good level of accuracy and repeatability and as only the tube contacts the pumped media (apart from standard pump where the Nylon inlet/outlet moulding also contacts pumped media), they are corrosion resistant, easy to clean, extremely reliable and inexpensive to maintain.

Additionally the 300 series of pumps offer extremely long tube life because of their low friction needle bearing rollers and unique tube cantering roller cage. Coupled to this the motor gearboxes are built with ball bearings throughout which also offers exceptional longevity. A special chemical resistant version (PP after part no) is also available that uses polypropylene tube fittings.

The 300 series is available as a pumphead only for use with customers own motors. A 6mm flatted shaft is required and a drawing can be provided if required, on request. Alternatively there is a range of AC motors which offers a constant fixed flow or DC models which offer a huge flow adjustment from 0.15 RPM up to 150RPM. In addition the AC models can be purchased in a ventilated case.

Model No	Series	ml/rev	Tube id	Tube Material		
PUMP HEADS						
300.PH.050	300 series pump head only	2.2	5 mm	silicone		
300.PH.060	300 series pump head only	3.2	6 mm	silicone		
301.PH.050	301 series pump head only	2	5 mm	santoprene		
301.PH.060	301 series pump head only	3	6 mm	santoprene		
302.PH.050	302 series pump head only	1.8	5 mm	viton		
302.PH.060	302 series pump head only	2.5	6 mm	viton		
300.PH.030.PP	300 series pump head only	1.1	3 mm	silicone		
300.PH.050.PP	300 series pump head only	2.2	5 mm	silicone		
300.PH.060.PP	300 series pump head only	3.2	6 mm	silicone		
301.PH.030.PP	301 series pump head only	1	3 mm	santoprene		
301.PH.050.PP	301 series pump head only	2	5 mm	santoprene		
301.PH.060.PP	301 series pump head only	3	6 mm	santoprene		
302.PH.030.PP	302 series pump head only	0.8	3 mm	viton		
302.PH.050.PP	302 series pump head only	1.8	5 mm	viton		
302.PH.060.PP	302 series pump head only	2.4	6 mm	viton		
PUMP ASSEMBLIES - AC						
Model No	Series	ml/minute	RPM	Voltage	Tube ID	Tube Material
300.050.230.050	300 series pump	100	50	230vAC	5 mm	silicone
300.050.230.060	300 series pump	160	50	230vAC	6 mm	silicone
300.050.115.050	300 series pump	100	50	115vAC	5 mm	silicone
300.050.115.060	300 series pump	160	50	115vAC	6 mm	silicone
300.080.230.050	300 series pump	160	80	230vAC	5 mm	silicone
300.080.230.060	300 series pump	256	80	230vAC	6 mm	silicone
300.080.115.050	300 series pump	160	80	115vAC	5 mm	silicone
300.080.115.060	300 series pump	256	80	115vAC	6 mm	silicone
301.050.230.050	301 series pump	100	50	230vAC	5 mm	santoprene
301.050.230.060	301 series pump	150	50	230vAC	6 mm	santoprene
301.050.115.050	301 series pump	100	50	115vAC	5 mm	santoprene

The flow rates shown on this website were calculated either by measuring the flow rate on the stated voltage with a one metre suction lift and zero discharge head pumping ordinary tap water with an ambient temperature of 20C or extrapolated from those figures by factoring for different gearshift rotation speed. The flow rates given should only be used as a guide and customers should run their own tests on their own application. We reserve the right to make changes to the pump which may result in variations to these figures and reserve the right to do this without notice. Customers should also check regularly to see if the published figures have changed in case it affects their system. The Williamson Manufacturing Company Ltd provides no warranty on usage of pumps. We recommend that life tests be carried out prior to use. This information is given in good faith and believed to be correct and current at time of publishing. The Williamson Manufacturing Company Ltd cannot accept responsibility for its inaccuracy or any errors or omissions contained herein. Copyright The Williamson Manufacturing Company Ltd 2011.

PUMP ASSEMBLIES - AC	Series	ml/minute	RPM	Voltage	Tube ID	Tube Material
301.050.115.060	301 series pump	150	50	115vAC	6 mm	santoprene
301.080.230.050	301 series pump	160	80	230vAC	5 mm	santoprene
301.080.230.060	301 series pump	240	80	230vAC	6 mm	santoprene
301.080.115.050	301 series pump	160	80	115vAC	5 mm	santoprene
301.080.115.060	301 series pump	240	80	115vAC	6 mm	santoprene
302.050.230.050	302 series pump	90	50	230vAC	5 mm	viton
302.050.230.060	302 series pump	120	50	230vAC	6 mm	viton
302.050.115.050	302 series pump	90	50	115vAC	5 mm	viton
302.050.115.060	302 series pump	120	50	115vAC	6 mm	viton
302.080.230.050	302 series pump	144	80	230vAC	5 mm	viton
302.080.230.060	302 series pump	192	80	230vAC	6 mm	viton
302.080.115.050	302 series pump	144	80	115vAC	5 mm	viton
302.080.115.060	302 series pump	192	80	115vAC	6 mm	viton
PP - PUMP ASSEMBLIES - AC	Series	ml/minute	RPM	Voltage	Tube ID	Tube Material
300.050.230.030.PP	300 series pump	55	50	230vAC	3 mm	silicone
300.050.230.050.PP	300 series pump	110	50	230vAC	5 mm	silicone
300.050.230.060.PP	300 series pump	160	50	230vAC	6 mm	silicone
300.050.115.030.PP	300 series pump	55	50	115vAC	3 mm	silicone
300.050.115.050.PP	300 series pump	110	50	115vAC	5 mm	silicone
300.050.115.060.PP	300 series pump	160	50	115vAC	6 mm	silicone
300.080.230.030.PP	300 series pump	88	80	230vAC	3 mm	silicone
300.080.230.050.PP	300 series pump	176	80	230vAC	5 mm	silicone
300.080.230.060.PP	300 series pump	256	80	230vAC	6 mm	silicone
300.080.115.030.PP	300 series pump	88	80	115vAC	3 mm	silicone
300.080.115.050.PP	300 series pump	176	80	115vAC	5 mm	silicone
300.080.115.060.PP	300 series pump	256	80	115vAC	6 mm	silicone
301.050.230.030.PP	301 series pump	50	50	230vAC	3 mm	santoprene
301.050.230.050.PP	301 series pump	100	50	230vAC	5 mm	santoprene
301.050.230.060.PP	301 series pump	150	50	230vAC	6 mm	santoprene
301.050.115.030.PP	301 series pump	50	50	115vAC	3 mm	santoprene
301.050.115.050.PP	301 series pump	100	50	115vAC	5 mm	santoprene
301.050.115.060.PP	301 series pump	150	50	115vAC	6 mm	santoprene
301.080.230.030.PP	301 series pump	80	80	230vAC	3 mm	santoprene
301.080.230.050.PP	301 series pump	160	80	230vAC	5 mm	santoprene
301.080.230.060.PP	301 series pump	240	80	230vAC	6 mm	santoprene
301.080.115.030.PP	301 series pump	80	80	115vAC	3 mm	santoprene
301.080.115.050.PP	301 series pump	160	80	115vAC	5 mm	santoprene
301.080.115.060.PP	301 series pump	240	80	115vAC	6 mm	santoprene
302.050.230.030.PP	302 series pump	40	50	230vAC	3 mm	viton
302.050.230.050.PP	302 series pump	90	50	230vAC	5 mm	viton
302.050.230.060.PP	302 series pump	120	50	230vAC	6 mm	viton
302.050.115.030.PP	302 series pump	40	50	115vAC	3 mm	viton
302.050.115.050.PP	302 series pump	90	50	115vAC	5 mm	viton
302.050.115.060.PP	302 series pump	120	50	115vAC	6 mm	viton
302.080.230.030.PP	302 series pump	64	80	230vAC	3 mm	viton
302.080.230.050.PP	302 series pump	120	80	230vAC	5 mm	viton
302.080.230.060.PP	302 series pump	192	80	230vAC	6 mm	viton

The flow rates shown on this website were calculated either by measuring the flow rate on the stated voltage with a one metre suction lift and zero discharge head pumping ordinary tap water with an ambient temperature of 20C or extrapolated from those figures by factoring for different gearshift rotation speed. The flow rates given should only be used as a guide and customers should run their own tests on their own application. We reserve the right to make changes to the pump which may result in variations to these figures and reserve the right to do this without notice. Customers should also check regularly to see if the published figures have changed in case it affects their system. The Williamson Manufacturing Company Ltd provides no warranty on usage of pumps. We recommend that life tests be carried out prior to use. This information is given in good faith and believed to be correct and current at time of publishing. The Williamson Manufacturing Company Ltd cannot accept responsibility for its inaccuracy or any errors or omissions contained herein. Copyright The Williamson Manufacturing Company Ltd 2011.

PP - PUMP ASSEMBLIES - AC

	Series	ml/minute	RPM	Voltage	Tube ID	Tube Material
302.080.115.030.PP	302 series pump	64	80	115vAC	3 mm	viton
302.080.115.050.PP	302 series pump	144	80	115vAC	5 mm	viton
302.080.115.060.PP	302 series pump	192	80	115vAC	6 mm	viton

PUMP ASSEMBLIES - DC

	Series	ml/minute	RPM	Voltage	Tube ID	Tube Material
300.SMA.150.050	300 series pump	330	150	24 - 30VDC	5mm	silicone
300.SMA.150.060	300 series pump	480	150	24 - 30VDC	6mm	silicone
301.SMA.150.050	301 series pump	300	150	24 - 30VDC	5mm	santoprene
301.SMA.150.060	301 series pump	450	150	24 - 30VDC	6mm	santoprene
302.SMA.150.050	302 series pump	270	150	24 - 30VDC	5mm	Viton
302.SMA.150.060	302 series pump	360	150	24 - 30VDC	6mm	Viton

PP - PUMP ASSEMBLIES - DC

	Series	ml/minute	RPM	Voltage	Tube ID	Tube Material
300.SMA.150.050.PP	300 series pump	330	150	24 - 30VDC	5mm	silicone
301.SMA.150.050.PP	301 series pump	300	150	24 - 30VDC	5mm	santoprene
302.SMA.150.050.PP	302 series pump	270	150	24 - 30VDC	5mm	Viton

PUMP ASSEMBLIES - CASED

	Series	ml/minute	RPM	Voltage	Tube ID	Tube Material
300C.050.230.050	300 series pump	100	50	230vAC	5 mm	silicone
300C.050.230.060	300 series pump	160	50	230vAC	6 mm	silicone
300C.050.115.050	300 series pump	100	50	115vAC	5 mm	silicone
300C.050.115.060	300 series pump	160	50	115vAC	6 mm	silicone
301C.050.230.050	301 series pump	100	50	230vAC	5 mm	santoprene
301C.050.230.060	301 series pump	150	50	230vAC	6 mm	santoprene
301C.050.115.050	301 series pump	100	50	115vAC	5 mm	santoprene
301C.050.115.060	301 series pump	150	50	115vAC	6 mm	santoprene
302C.050.230.050	302 series pump	90	50	230vAC	5 mm	viton
302C.050.230.060	302 series pump	120	50	230vAC	6 mm	viton
302C.050.115.050	302 series pump	90	50	115vAC	5 mm	viton
302C.050.115.060	302 series pump	120	50	115vAC	6 mm	viton

PP-PUMP ASSEMBLIES-CASED

	Series	ml/minute	RPM	Voltage	Tube ID	Tube Material
300C.050.230.030.PP	300 series pump	55	50	230vAC	3 mm	silicone
300C.050.230.050.PP	300 series pump	110	50	230vAC	5 mm	silicone
300C.050.230.060.PP	300 series pump	160	50	230vAC	6 mm	silicone
300C.050.115.030.PP	300 series pump	55	50	115vAC	3 mm	silicone
300C.050.115.050.PP	300 series pump	110	50	115vAC	5 mm	silicone
300C.050.115.060.PP	300 series pump	160	50	115vAC	6 mm	silicone
301C.050.230.030.PP	301 series pump	50	50	230vAC	3 mm	santoprene
301C.050.230.050.PP	301 series pump	100	50	230vAC	5 mm	santoprene
301C.050.230.060.PP	301 series pump	150	50	230vAC	6 mm	santoprene
301C.050.115.030.PP	301 series pump	50	50	115vAC	3 mm	santoprene
301C.050.115.050.PP	301 series pump	100	50	115vAC	5 mm	santoprene
301C.050.115.060.PP	301 series pump	150	50	115vAC	6 mm	santoprene
302C.050.230.030.PP	302 series pump	40	50	230vAC	3 mm	viton
302C.050.230.050.PP	302 series pump	90	50	230vAC	5 mm	viton
302C.050.230.060.PP	302 series pump	120	50	230vAC	6 mm	viton
302C.050.115.030.PP	302 series pump	40	50	115vAC	3 mm	viton
302C.050.115.050.PP	302 series pump	90	50	115vAC	5 mm	viton
302C.050.115.060.PP	302 series pump	120	50	115vAC	6 mm	viton

The flow rates shown on this website were calculated either by measuring the flow rate on the stated voltage with a one metre suction lift and zero discharge head pumping ordinary tap water with an ambient temperature of 20C or extrapolated from those figures by factoring for different gearshift rotation speed. The flow rates given should only be used as a guide and customers should run their own tests on their own application. We reserve the right to make changes to the pump which may result in variations to these figures and reserve the right to do this without notice. Customers should also check regularly to see if the published figures have changed in case it affects their system. The Williamson Manufacturing Company Ltd provides no warranty on usage of pumps. We recommend that life tests be carried out prior to use. This information is given in good faith and believed to be correct and current at time of publishing. The Williamson Manufacturing Company Ltd cannot accept responsibility for its inaccuracy or any errors or omissions contained herein. Copyright The Williamson Manufacturing Company Ltd 2011.

SPARE TUBES	Series	Quantity	Tube ID	Tube Material
300.TUBE.030/1M	For use on PP models only	Per metre	3mm	Silicone
300.TUBE.050/1M		Per metre	5mm	Silicone
300.TUBE.060/1M		Per metre	6mm	Silicone
301.TUBE.030/1M	For use on PP models only	Per metre	3mm	Santoprene
301.TUBE.050/1M		Per metre	5mm	Santoprene
301.TUBE.060/1M		Per metre	6mm	Santoprene
302.TUBE.030/1M	For use on PP models only	Per metre	3mm	Viton
302.TUBE.050/1M		Per metre	5mm	Viton
302.TUBE.060/1M		Per metre	6mm	Viton

SPARE TUBE ASEMBLIES	Series	Quantity	Tube ID	Tube Material
300.TUBE.050.ASSY	300 series	1	5mm	Silicone
300.TUBE.060.ASSY	300 series	1	6mm	Silicone
301.TUBE.050.ASSY	301 series	1	5mm	Santoprene
301.TUBE.060.ASSY	301 series	1	6mm	Santoprene
302.TUBE.050.ASSY	302 series	1	5mm	Viton
302.TUBE.060.ASSY	302 series	1	6mm	Viton

PP - SPARE TUBE ASEMBLIES	Series	Quantity	Tube ID	Tube Material
300.TUBE.030.PP	300 series	1	3mm	Silicone
300.TUBE.050.PP	300 series	1	5mm	Silicone
300.TUBE.060.PP	300 series	1	6mm	Silicone
301.TUBE.030.PP	301 series	1	3mm	Santoprene
301.TUBE.050.PP	301 series	1	5mm	Santoprene
301.TUBE.060.PP	301 series	1	6mm	Santoprene
302.TUBE.030.PP	302 series	1	3mm	Viton
302.TUBE.050.PP	302 series	1	5mm	Viton
302.TUBE.060.PP	302 series	1	6mm	Viton

Notes:-
 Cased units are supplied as standard with 2 metre power cord (3 core) with bared ends.
 Cased units are not fitted with an ON/OFF switch as standard, but one can be specified at extra cost.
 All cased units are fixed output
 DC models are variable speed via a potentiometer on the back of the motor, Minimum 0.15RPM.
 For volume applications three, four and six roller versions can be supplied.
 DC models can be supplied on request. Please contact us for details.
 Many other tube materials are available on request. Please contact us for details.

The easiest way to place an order or check prices is via our online shop at <http://www.williamson-shop.co.uk> but please contact us for any requirements not listed.

The flow rates shown on this website were calculated either by measuring the flow rate on the stated voltage with a one metre suction lift and zero discharge head pumping ordinary tap water with an ambient temperature of 20C or extrapolated from those figures by factoring for different gearshift rotation speed. The flow rates given should only be used as a guide and customers should run their own tests on their own application. We reserve the right to make changes to the pump which may result in variations to these figures and reserve the right to do this without notice. Customers should also check regularly to see if the published figures have changed in case it affects their system. The Williamson Manufacturing Company Ltd provides no warranty on usage of pumps. We recommend that life tests be carried out prior to use. This information is given in good faith and believed to be correct and current at time of publishing. The Williamson Manufacturing Company Ltd cannot accept responsibility for its inaccuracy or any errors or omissions contained herein. Copyright The Williamson Manufacturing Company Ltd 2011.

300 series

Materials of Construction:-

Pump body - Polypropylene

Pump lid - Polypropylene

Roller assembly - rotor plated aluminium

Needle bearings - stainless steel

Inlet/Outlet moulding - Nylon

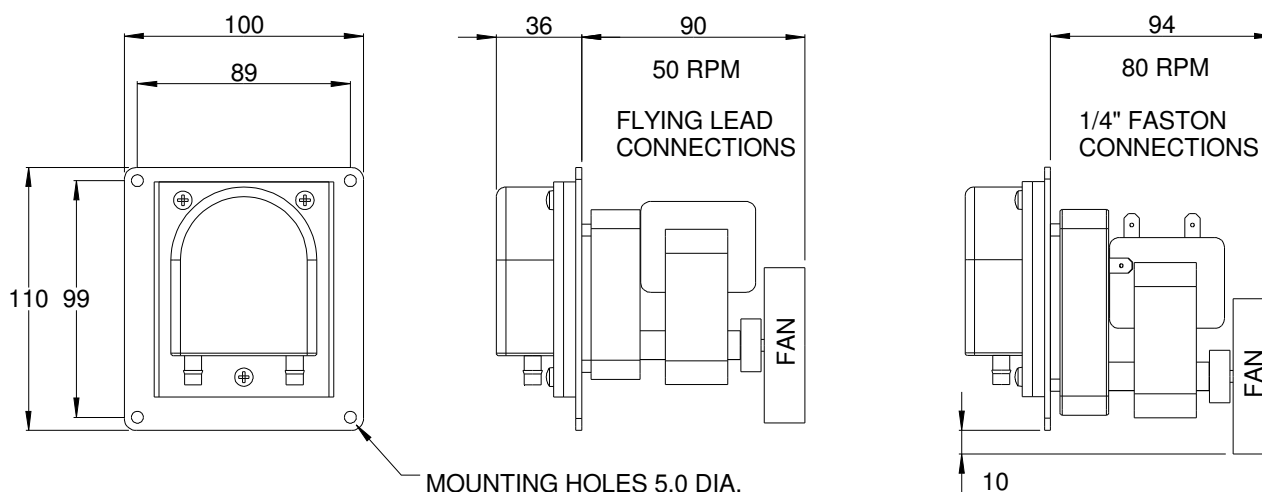
Fixing screws - plated steel

Bracket (if supplied) - Zintec

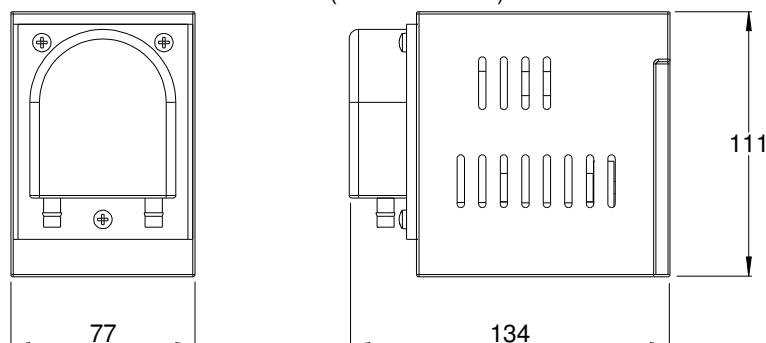
PP versions - connectors - polypropylene

Cased versions - case 10% glass filled Polycarbonate

Dimensions:-



CASED UNIT (50 RPM ONLY)



The flow rates shown on this website were calculated either by measuring the flow rate on the stated voltage with a one metre suction lift and zero discharge head pumping ordinary tap water with an ambient temperature of 20C or extrapolated from those figures by factoring for different gearshift rotation speed. The flow rates given should only be used as a guide and customers should run their own tests on their own application. We reserve the right to make changes to the pump which may result in variations to these figures and reserve the right to do this without notice. Customers should also check regularly to see if the published figures have changed in case it affects their system. The Williamson Manufacturing Company Ltd provides no warranty on usage of pumps. We recommend that life tests be carried out prior to use. This information is given in good faith and believed to be correct and current at time of publishing. The Williamson Manufacturing Company Ltd cannot accept responsibility for its inaccuracy or any errors or omissions contained herein. Copyright The Williamson Manufacturing Company Ltd 2011.